



TRAVEL ANYWHERE

TRAVEL TRAILERS • FIFTH WHEELS • PARK TRAILERS



MADE IN THE USA





## SANDPIPER FIFTH WHEELS

Sandpiper, where innovation meets design. Sandpiper has been setting new standards in recreational design and engineering through bold innovation, a refined sense of aesthetics, and precision manufacturing. Whether it be the plush new interior fabrics and colors or the intricacies of our hand crafted slide out fascia Sandpiper has been on the cutting edge of ingenuity. Our goal this year as it is every year is to once again outperform expectations.







345RET WHEAT INTERIOR

*Sandpiper*



## SANDPIPER FIFTH WHEELS

Sandpiper fifth wheels set the industry standard for features, comfort and quality. When you step inside a Sandpiper you will sense our dedication to our loyal customers. Our commitment shows through and through from our professionally designed interiors to the quality of our sturdy vacuum bonded sidewalls. With Sandpiper, there is no compromise with quality or craftsmanship.



*Sandpiper*





340RL KAHLUA INTERIOR

*Sandpiper*





## SANDPIPER FIFTH WHEELS

Sandpiper fifth wheels are designed for entertaining. Our spacious slideouts feature large picture windows that let in an abundance of natural light, tons of storage and plenty of comfortable seating. Our bunk areas feature a built in entertainment center that is great for entertaining and a private sleeping area for kids and adults alike.





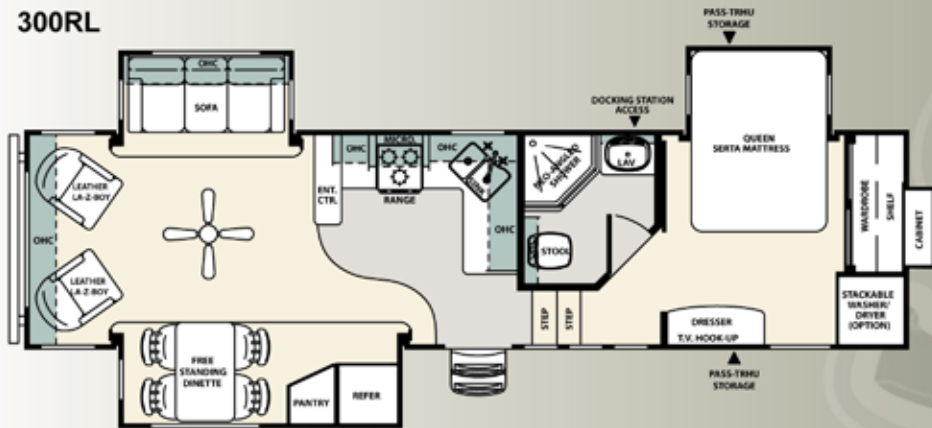
365SAQ REAR BUNK ROOM  
WITH EXTERIOR KITCHEN OPTION.  
(TV NOT INCLUDED)

*Sandpiper*



## SANDPIPER FIFTH WHEEL FLOORPLANS

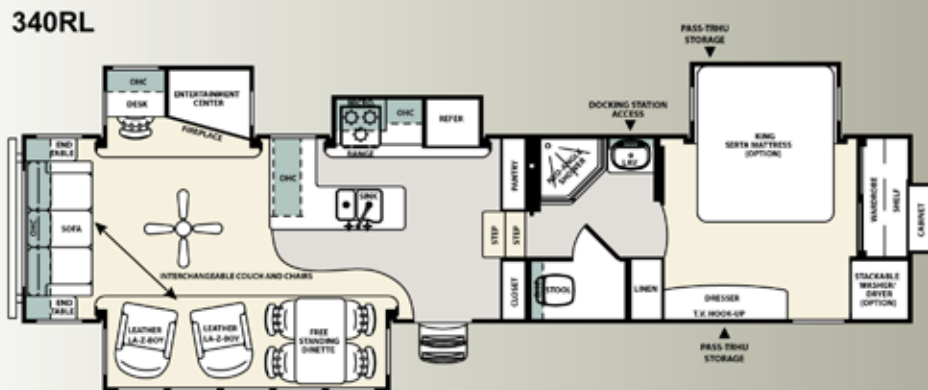
300RL



345RET



340RL

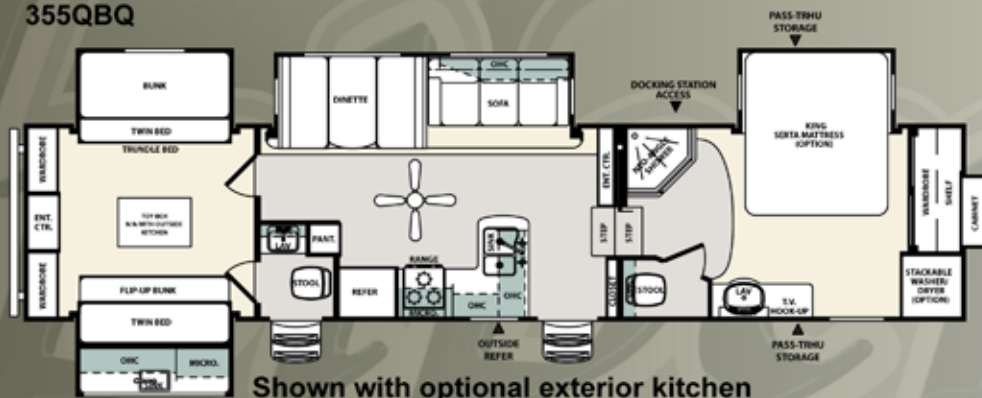


356RL

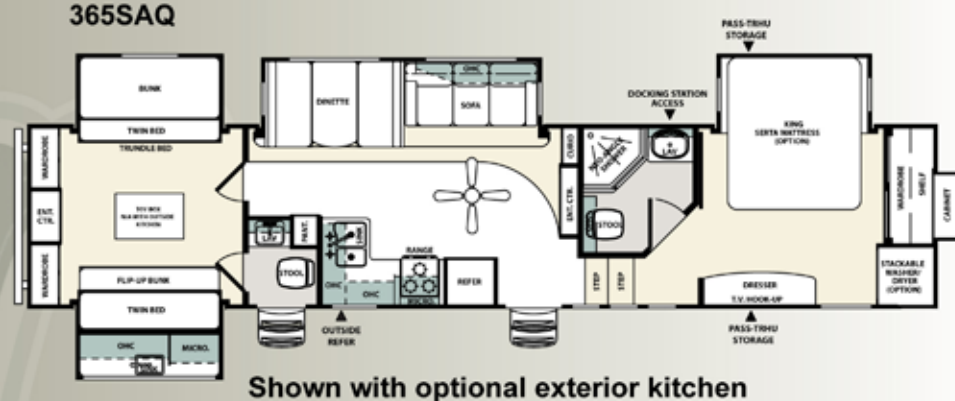




### 355QBQ



### 365SAQ



Model	300RL	340RL	345RET	355QBQ	356RL	365SAQ
Hitch Weight	2,564	3,187	2,175	1,923	2,154	2,060
Unit Weight	10,381	11,905	10,983	10,976	10,876	11,873
Length	33' 8"	39' 9"	38' 11"	39' 3"	40' 9"	41' 7"
Height	12' 11"	13' 4"	12' 9.5"	13' 0"	12' 10"	13' 0"
Awning Size	21'	19'	18'	21'	18'	21'
Gray Tank (cap)	54	54	108	108	108	108
Black Tank (cap)	54	54	54	108	54	108
Fresh Tank (cap)	54	54	54	54	54	54





## SANDPIPER DESTINATION MODELS

Even though your destination may be unknown, what you will be certain of is the quality and design put into every destination travel trailer by Sandpiper. With comfort and elegance in mind, Sandpiper's destination trailers have been carefully crafted with extended stay modifications. Features such as a king size Serta® mattress, luxurious leather La-Z-Boy® recliners or the 18 cubic foot residential size refrigerator makes staying in a Sandpiper a palace you will never want to leave.



403FK

*Sandpiper*



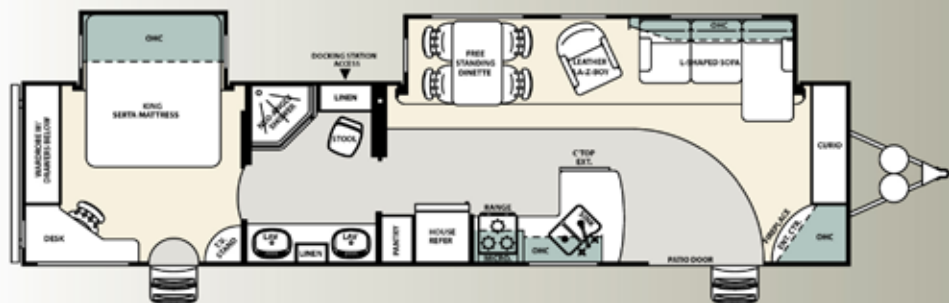


403FK KAHLUA INTERIOR

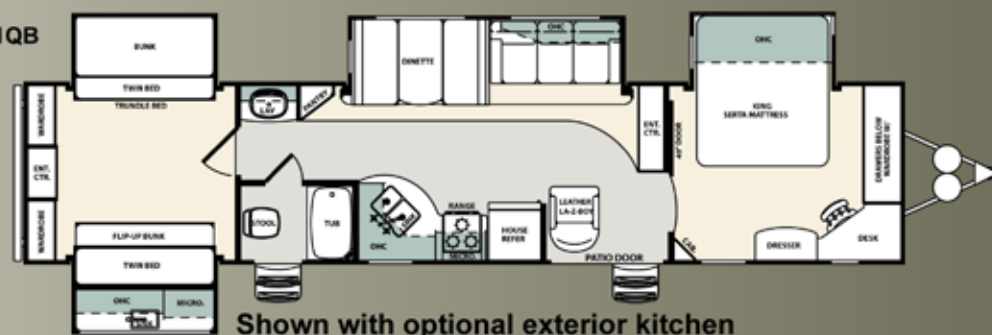
*Sandpiper*

## SANDPIPER DESTINATION MODEL FLOORPLANS

361FL



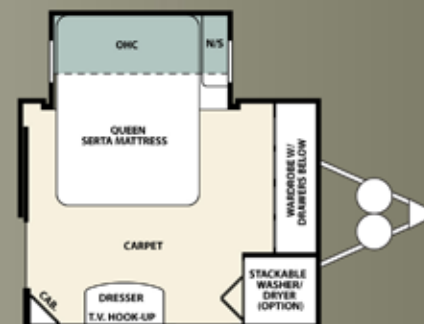
391QB



403FK



Option A



OPTIONAL STACKABLE WASHER/DRYER  
LAYOUT AVAILABLE ON ALL DESTINATION MODELS

Model	361FL	391QB	403FK
Hitch Weight	1,273	1,334	1,506
Unit Weight	9,816	10,569	9,736
Length	37'4"	42'0"	41'3"
Height	11'9"	11'9"	11'9"
Awning	21'	21'	21'
Gray Tank (Cap)	108	54	108
Black Tank (Cap)	54	54	54
Fresh Tank (Cap)	54	54	54



403FK

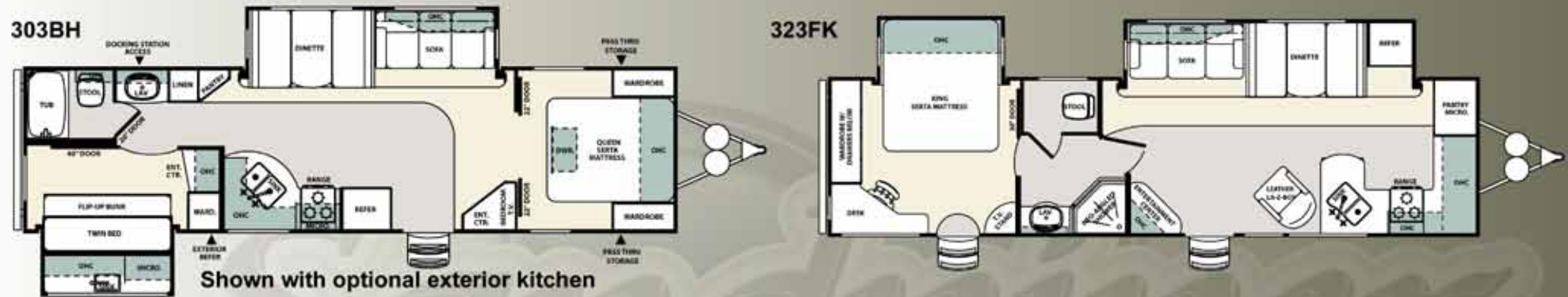




403FK REAR BEDROOM

*Sandpiper*

## SANDPIPER TRAVEL TRAILER FLOORPLANS



Model	303BH	323FK
Hitch Weight	938	817
Unit Weight	8,194	8,660
Length	34' 10"	35' 11"
Height	11' 6"	11' 6"
Awning	19'	19'
Gray Tank (cap)	88.5	108
Black Tank (cap)	54	54
Fresh Tank (cap)	54	54





ALL WEATHER  
EXTERIOR KITCHEN

## SANDPIPER EXTERIOR KITCHEN

Option Available on the 303BH, 391QB, 355QBQ and 365SAQ

Sandpiper's unique exterior kitchen brings the joys of camp cooking to the outdoors where it truly belongs. Sandpiper's exterior kitchen offers a very modern look with its use of L.E.D. lights and rich water resistant cabinetry to store everything needed to prepare the perfect meal while still enjoying the wonders of nature. Rain or shine Sandpiper's outdoor kitchen turns cooking into something extraordinary rather than ordinary.

*Sandpiper*

## SANDPIPER INTERIOR FEATURES



Optional stackable washer/dryer.(available per floorplan)



Handcrafted fascia gives the slide-out a distinguished look.



Serta™ Dreamscape mattress is a Forest River exclusive feature.



LED lighting in exterior kitchen seen at twilight.



Contemporary ceiling fan with light kit.



Porcelain foot flush toilet, easy to use, easy to clean.



LED lighting in exterior kitchen seen during daylight.



Amber threshold lighting at main entrance for added safety.



Full extension ball bearing drawer glides.



Relax in comfort in a Leather La-Z-Boy recliner IPO swivel rocker.



## SANDPIPER EXTERIOR FEATURES



110v outlet and cable outlet conveniently located in the pass thru storage area.



Flush mount exterior speakers for your listening pleasure.



Heated and enclosed underbelly protects your coach and improved airflow allows for a sturdier ride.



Sandpiper's command center allows you to monitor tanks and other systems quickly and easily.



Wide stance power front jacks with quick release snap pins.



Contemporary aluminum rims with E-rated radial tires. (per floorplan)



Optional under mount exterior storage bin, keep commonly used items close at hand.



Lighted docking station is conveniently located in the large pass-thru storage area.



Gel coat fiberglass protects from UV rays and prevents yellowing and cracking.



Drip rail with extra long drip spouts that help prevent black streaking.



2 quick connect spray ports (one on each side) are great for easy clean up.



Sandpiper's "ICEBOX" is a quick and easy way to grab a cold snack and beverage without entering your unit.



## SANDPIPER CONSTRUCTION

- A. ROLLED ALUMINUM SIDED SKIRTING
- B. TINTED WINDOWS (80%)
- C. DUCTED 15K BTU AIR CONDITIONING
- D. E-Z LUBE DEXTER AXLES
- E. LAMINATED VACUUM BONDED ALUMINUM SIDEWALLS
- F. RADIAL TIRES
- G. HICKORY SPRINGS™ RADIUS ENTRY STEPS
- H. SEAMLESS RUBBER ROOF (12 YR. WARRANTY)
- I. BLOCK FOAM INSULATION
- J. 28 oz. CARPET W/ PADDING

- K. 3/8" ROOF DECKING (FULL WALK-ON ROOF)
- L. 5/8" TONGUE AND GROOVE FLOORING
- M. ENCLOSED UNDERBELLY W/ RADIANT HEAT
- N. 10" I-BEAM POWDER-COATED FRAME W/ RUST INHIBITOR
- O. ALUMINUM LAMINATED BATH DECK
- P. POWER FRONT JACKS WITH QUICK RELEASE SNAP PINS
- Q. RADIUS ROOF EDGE
- R. HIGH GLOSS GEL-COAT FIBERGLASS EXTERIOR
- S. FRONT GEL-COAT FIBERGLASS CAP (STANDARD)
- T. IMPROVED FRONT CAP FOR SHARPER TURNING RADIUS



## EXTERIOR FEATURES

- High gloss gel coat fiberglass
- New aerodynamic fiberglass front cap with improved turning radius
- Enclosed and heated dump valves
- Docking station: easy winterization, Hot and cold spray port, black Tank flush, pull valves for tanks
- Large tinted windows with 80/20 UV prohibitor
- E-Z LUBE Dexter axles
- Dexter Nev-R-Adjust™ brakes
- Hickory Springs™ radius triple steps with 9" riser (no pinched fingers)
- Dometic™ "One-Touch" electric awning with adjustable arms
- Power front jacks with spring loaded snap pins (fifth wheels)
- 16" Radial tires-E Rated (fifth wheels)
- Automotive-style fender skirts
- Hitch light
- Exterior refrigerator (per floorplan)
- Porch light with interior switch
- Lighted threshold at entry door
- Patio recreation light with interior switch
- 30 lb. double LP tanks with auto change over
- Roof ladder (Std. on fifth wheels)
- Black tank flush
- 2 exterior speakers
- Rain gutters with extra long drip Spouts (prevents black streaking)
- Insulated heavy duty lockable Baggage doors
- Exterior foldable grab handle
- Unobstructed pass-through Storage area with cable jacks and 110V outlet (5" s)
- 2 spray ports with 25' hose (one on each side)

## INTERIOR FEATURES

- 84" interior height with 6'4" slide heights (5" s)
- Leather La-Z-Boy® recliners
- Four color coordinated interiors (Wheat, Kahlua, Martini, Mojito)
- Full extension ball bearing drawer glides
- Serta® Dreamscape mattress
- Stone cast under mounted kitchen sink
- Stackable washer/dryer prep
- Handmade cabinetry with screwed Lumber core stile construction and brass hardware
- Handcrafted main slideout fascia
- Prep for second A/C
- Self edged residential countertops
- Extra large picture windows Throughout

- Vented side windows in slideouts
- TV antenna with booster
- Surround sound TV hook-up
- Solid oak drawer fronts with pine sides
- Raised panel cabinet doors
- Bedroom slideout fascia
- Neo-Angle Shower with glass door (where available)
- Designer window treatment accented per decor
- Overhead cabinet in slideout
- Residential black panel refer door insert
- Ceiling fan with lighting kit (fifth wheels)
- Upgraded decorative lighting throughout
- King bed (where available)
- Hide-a-bed sofa w/ air mattress
- 28 oz. carpeting
- Center mounted A/C unit for even cooling
- Quilted bedspread
- Shower surround with etched tile pattern
- Wrought iron package: headboard, spice rack, picture, clock
- Trash receptacle in kitchen
- Wood plank linoleum

## APPLIANCES/SYSTEMS

- Ducted Dometic® 15K A/C with quick cool
- Sandpiper command center for switches
- Floor ducted 35,000 BTU furnace
- Three burner High output range w/ 22" oven
- 8 cubic ft. double door Refrigerator (5" s)
- Interior monitor panel for holding tanks
- Interior thermostat for heating and cooling
- Flush floor hydraulic slideouts (per floorplan)
- Satellite and cable hookup with RG-6 cable for high quality picture
- Porcelain foot flush toilets
- Full coach water filtration system
- 10 Gal. DSI Water heater (5" s)

## CONSTRUCTION

- Welded aluminum-framed, vacuum Bonded laminated superstructure
- Laminated and fully insulated bathroom floor deck (fifth wheels)
- 2" x 3" floor joists 12" on center
- 5/8" tongue & groove plywood floor decking
- 3/8" roof decking (full walk-on roof)
- Cambered powder coated frame with rust prohibitor

- Fully enclosed underbelly, insulated with radiant heat
- 5" truss roof rafters
- R-10 sidewall construction

## POPULAR OPTIONS

- King bed (where available)
- Corian® countertops in kitchen (5th's only)
- Free-standing dinette with 4 chairs
- Stackable washer and dryer (per floorplan)
- Aluminum wheels (travel trailers)
- Second Air Conditioner-Bedroom
- Serta® Trump Home Luxury mattress
- Fantastic fan with power hood Operated with wall switch
- 12 Volt heated holding tanks
- Equaflex™ equalizer system
- All weather exterior kitchen
- Under mount storage box
- U-shaped dinette
- Ceramic tile look linoleum

## FOR YOUR SAFETY

- Smoke alarm
- Fire extinguisher
- Breakaway switch (battery hook-up required)
- Dead-bolt lock on entry door
- Liquid propane (LP) gas detector
- Fire escape windows

## SANDPIPER SIGNATURE PACKAGE

- High gloss gel coat fiberglass
- Serta® "Dreamscape" mattress
- Wrought iron package
- Flat screen LCD/HD TV w/ swing arm (sizes vary per floorplan)
- Jensen AM/FM CD/DVD player with MP3 capabilities
- Home theater surround sound system
- Water filter system
- Fantastic fan in bath
- CO<sub>2</sub> detector
- Wire and brace for 2nd A/C (fifth wheels)
- 50 amp service (fifth wheels)
- 10 gal. DSI water heater
- Upgraded rims

## DECOR OPTIONS

### MOJITO



### KAHLUA



### MARTINI

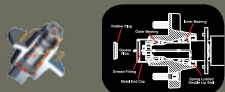


### WHEAT



## The Dexter Difference

**E-Z LUBE®**  
BEARING LUBRICATION SYSTEM



The E-Z Lube system allows grease to flow with ease to both the outer and inner bearings for a complete repack. No disassembly required.

**NEV-R-ADJUST™**  
PERMANENT SELF-ADJUSTING ELECTRIC BRAKES

### DEXTER ENGINEERING TEST RESULTS



The NEV-R-ADJUST™ brake system automatically forward adjusts, reducing stopping distance and saving you time and money.



**DEXTER AXLE**

**2 Year Warranty**  
DEXTER AXLE COMPANY



## PEACE OF MIND.

Forest River has yet another exclusive feature to offer: One year of free roadside assistance will be given to every new Sandpiper customer. This is just one more way to say "Thank you" and to ensure an enjoyable traveling experience.



## 20,000 SQUARE FEET OF QUALITY ASSURANCE

### THE BARE ESSENTIALS FOR A PREMIUM PRODUCT

Brought online in 2005, Forest River is proud of its state-of-the-art test facility. This beautiful building blends many of the old tried and true methods of testing our diverse types of RVs with new innovative ways of solving quality issues. Being centrally located to most Forest River manufacturing facilities, this 20,000 square foot PDI (Pre-delivery Inspection) test building gives immediate daily feedback to individual managers. This assures the production facilities that nothing has slipped by the plant's quality assurance personnel and the units are "green" and ready to ship.

## Forest River Encourages You to Buy Locally

Forest River, Inc. strongly encourages our retail customers to purchase from their local dealership whenever possible due to the following factors:

- Our Dealers are as a rule, independently owned and operated businesses. Outside of those customers they personally sold products to, they are not contractually obligated to perform warranty service on Forest River products that were purchased elsewhere. There may be an occasion that you would be required to return to the point of purchase to satisfy warranty requirements.
- Although many dealerships will eventually service products not purchased at their place of business, they will usually take care of their customers and other Forest River customers who are traveling away from their local dealer as they would their own.
- Local purchases allow a customer to establish a relationship with a dealer close to home. This relationship provides the customer with a convenient location for service and support from a "home town" professional.
- The opportunity for a thorough PDI (Pre Delivery Inspection) and product orientation is an additional benefit of buying from your local dealer. Further providing the opportunity for refresher courses or the ability to get questions answered much more conveniently.
- For our Canadian customers, there are also requirements which must be met to bring an RV purchased out of the country to their home. Although not insurmountable, these requirements may involve such things as additional inspections and certifications, taxes and fees. Your local Canadian Dealer is a professional at meeting these requirements.

Forest River's goal is for all RV Owners to fully enjoy their RV experience. In light of this goal, and considering the advantages of buying local, we encourage you to be thorough when determining what product to purchase and which dealer to purchase it from as both are key to your ultimate satisfaction and the realization of your dreams.



Forest River, Inc.  
55470 C.R. 1  
Elkhart, IN 46514  
(574) 533-5934  
[www.forestriverinc.com](http://www.forestriverinc.com)  
[www.forestriveraccessories.com](http://www.forestriveraccessories.com)



Scan this barcode using a QR Reader on your smart phone to learn more about Forest River and our great products.

Your Sandpiper Dealer

All specifications contained herein are based on the latest product information at time of printing. Forest River reserves the right to make changes in colors, materials, equipment and specifications at any time without notice and assumes no responsibility for any errors in this brochure. PLD 081011