

*Sun  
Valley*  
by EVERGREEN

2013

**Value – Quality – Versatility**







## Value – Quality - Versatility

The Sun Valley travel trailer inherits all of EverGreen's best features at a more affordable price. Sun Valley is available in versatile floor plans packed with amenities, stylishly delivered and expertly executed in a lightweight, easy to tow package. The newest travel trailer from EverGreen also comes at an affordable price that is sure to please the entire spectrum of RV enthusiasts from entry-level families to seasoned road veterans.



### Walls

1. Plywood substrate
2. Fully welded aluminum frame
3. High-density, block foam insulation
4. Plywood substrate
5. Glossy fiberglass reinforced exterior

### Roof

6. Plywood substrate
7. Fully welded, walk on, crowned aluminum frame
8. High-density, block foam insulation
9. Plywood substrate
10. Reflective, white TPO roofing

### Floor

11. Enclosed, seamless underbelly
12. Fully welded aluminum frame
13. Woven plastic floor brace
14. Plywood substrate
15. High-density, block foam insulation
16. Plywood substrate
17. Padded "No-Crack" vinyl floor
18. Steel I-beam frame





## STANDARD FEATURES

### Construction

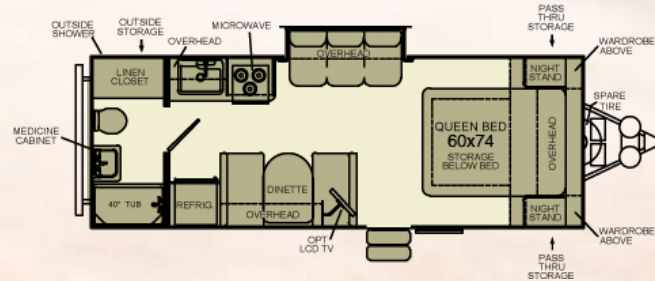
- Steel I-beam frame • Vacuum-laminated side walls, roof and floors
- Tough fiberglass reinforced exterior • Walk-on crowned roof fully laminated with white, reflective TPO material • Four, frame-mounted stabilizer jacks • Diamond plate front stone guard

### Exterior

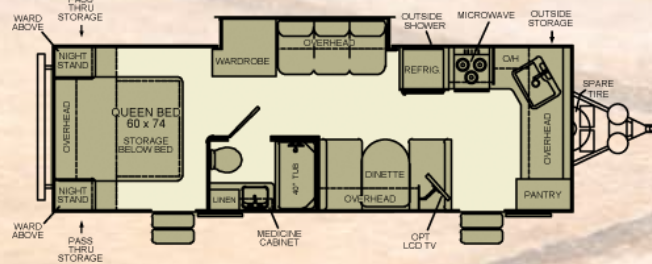
- Large, dark tinted radius windows • Porch light • Exterior speakers
- Awning • Radius entry door • Large pass-through storage
- Designer graphics • Large baggage doors W/slam latches

### Utilities

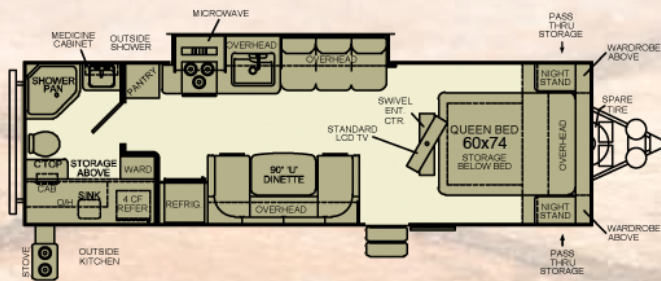
- Detachable Power cord with the LED indicator light • Exterior LCD TV hook up with bracket, cable hook up • Furnace • Electronic tank readouts • Water pump with winterizing inlet • Fire extinguisher, carbon monoxide detector, smoke alarm • LP quick disconnect (gas grill ready) • LP harness and machine-crimped fittings • Gear-driven 4-point slide system



MODEL S24RB



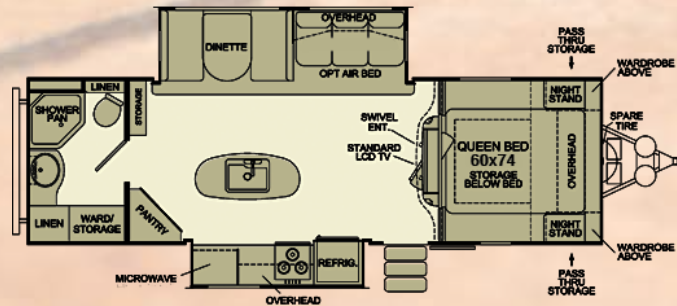
MODEL S26FK



MODEL S28RBK



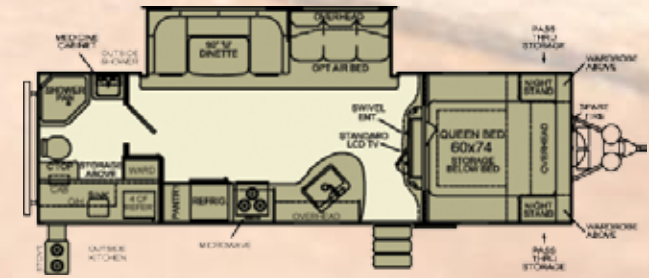
MODEL S28RLS



MODEL S29KIS



MODEL S29RLW



MODEL S29RBK

**Compare the EverGreen Warranty: 1-year limited warranty, 3-year limited structural warranty, 12-year roof warranty, 1 year free roadside assistance.**

### Kitchen

- Padded 'no crack' vinyl flooring • Large kitchen window with blind
- Full-size composite sink with cover and gooseneck faucet
- Screwed and glued solid wood cabinetry • Microwave
- Three-burner range W/oven • Double-door refrigerator/freezer
- Plywood drawers with full extension ball bearing guides

### Living

- Entertainment center with 20" TV (model specific)
- Ceiling speakers

### Bath

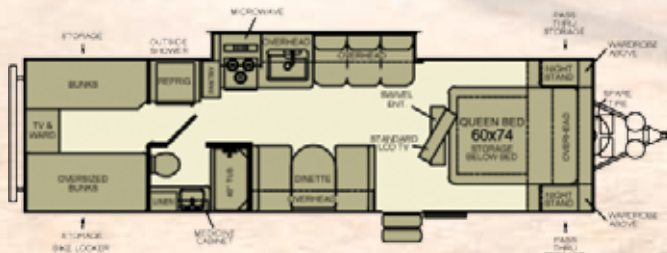
- Full tub/or neo-angled shower • Skylight over shower/tub • Large medicine cabinet and mirror • Power exhaust fan • Oil rubbed bronze fixtures

### Bedroom

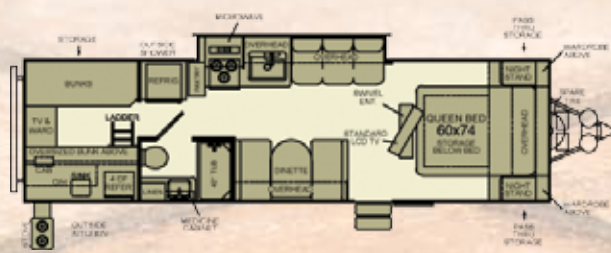
- Queen bed with inner spring mattress • Under-bed storage with lift struts • Decorative headboards & bed spread • Dual wardrobes
- Two nightstand nooks with power outlets

### Sun Valley Select Value Package

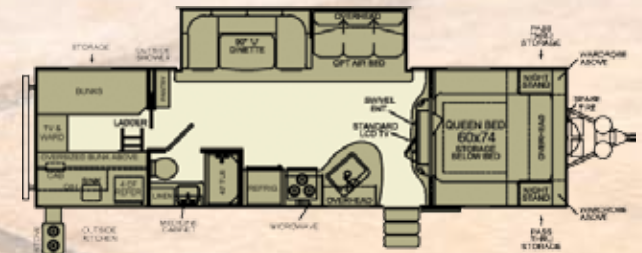
- Protective enclosed underbelly • Six Side welded aluminum framed sidewalls, roof and floor • AM/FM/DVD/CD, with USB/SD port w/ interior/Ext. Speakers • (2) 20# LP Tanks w/ hard shell cover
- Six-gallon gas/electric direct spark ignition water heater • Porcelain foot flush toilet • Outside shower • Spare tire and carrier • Swing out grab bar • Pleated shades • 13,500 Ducted roof A/C • 14" radial, nitro-filled tires with powder coated rims & chrome trim rings • Omni Directional TV/Radio antenna and booster • Fiberglass front cap with LED lights • Diamond plate front stone guard • Black Tank Flush



MODEL S29QB



MODEL S29QBK



MODEL S30BHK

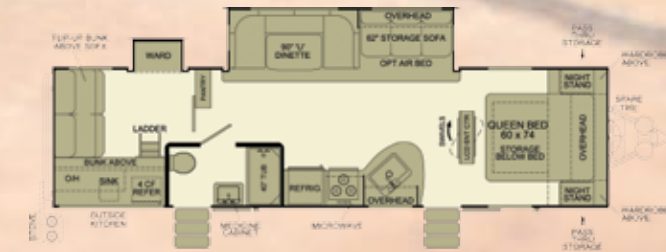


MODEL S31REW



MODEL S300BHSL

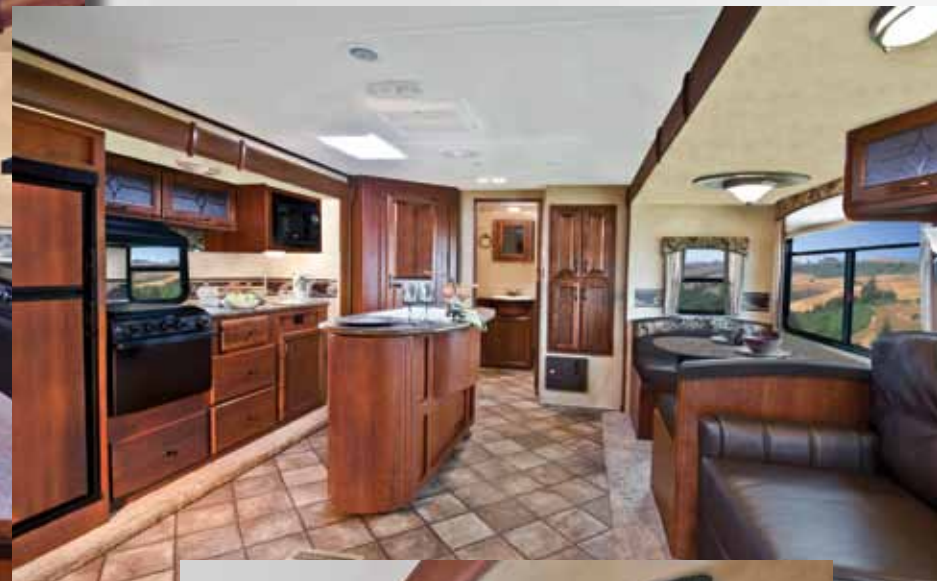
**NEW!**



MODEL S311SQB

**NEW!**





VERO



# DECOR

Latte' Decor

Horizon Decor

Graphite Decor

## SPECIFICATIONS

	S24RB	S26FK	S28RBK	S28RLS	S29QB	S29QBK	S29RLW	S29KIS	S29RBK	S30BHK	S31REW	S300BHSL	S311SQB
Total Dry Weight (UVW):	4,342	4,935	5,625	5,213	5,571	5,856	6,342	6,680	6,247	6,642	7,279	6,632	6,632
Dry Hitch Weight (LBS):	645	670	645	730	720	710	740	960	790	845	900	781	900
GVWR (LBS):	5,895	6,495	7,150	6,795	7,125	7,420	8,695	8,995	8,595	9,195	9,895	9,995	9,995
Fresh Water Capacity (GAL):	36	36	36	36	36	36	56	56	56	56	56	56	56
Gray Water Tank Capacity (GAL):	29	58	29	29	29	29	58	58	58	29	58	58	58
Black Water Tank Capacity (GAL):	29	29	29	29	29	29	29	29	29	29	29	29	29
LP Capacity (LBS):	40	40	40	40	40	40	40	40	40	40	40	40	40
Cargo Carrying Capacity (LBS):	1,254	1,261	1,226	1,283	1,255	1,265	1,888	1,850	1,883	2,088	2,151	1,880	2,198
Overall Length:	27'-4"	29'-5"	32'-2"	31'-5"	33'-10"	33'-10"	32'-5"	32'-0"	32'-2"	34'-9"	36'-5"	37'-8"	35'-8"
Height (including A/C):	10'	10'	10'	10'	10'	10'	10'-8"	10'-8"	10'-8"	10'-8"	10'-8"	10'-8"	10'-8"
Width:	8'-1"	8'-1"	8'-1"	8'-1"	8'-1"	8'-1"	8'-1"	8'-1"	8'-1"	8'-1"	8'-1"	8'-1"	8'-1"
Bed Size (inches):	60x74	60x74	60x74	60x74	60x74	60x74	60x74	60x74	60x74	60x74	60x74	60x74	60x74
Power Awning Length:	18'	20'	16'	16'	18'	18'	20'	20"	16'	18'	18'	20'	16'
Tire Size:	ST205/75R14-C						ST225/75R15-D						

\*Weights Estimated.

Specifications Subject To Change.

## OPTIONS

- 15,000 BTU air conditioner • 50 amp service with second AC prep • Second 13,500 BTU air conditioner • 20-inch LCD flat panel TV (32-inch TV upgrade on deep slide models)
- Power tongue jack • Power stabilizer jacks front and rear • Dual pane windows
- Power awning, Aluminum wheels • Shower enclosure • Hide-a-bed
- Free standing table and four chairs • Wall hugger recliners • Fireplace with remote control

Compliments of:



18<sup>th</sup> Annual RVDA DEALER  
SATISFACTION INDEX  
2011 Award Winner

EVERGREEN  
RECREATIONAL VEHICLES

2013 10758 County Road 2 • Middlebury, IN 46540 • Phone: (574) 825-4298 • Fax: (574) 825-4299

[www.GoEverGreenRV.com](http://www.GoEverGreenRV.com)

